

In Vitro Proliferation and Differentiation of Osteoblasts on Electrospun Polycaprolactone Scaffold

Mansur Ahmad (PI), Patcharaporn Wutticharoenmongkol

Department of Diagnostic and Biological Sciences, University of Minnesota School of Dentistry

● DESCRIPTION OF WORK

- ◆ Electrospun polycaprolactone (EPCL) scaffold has potential to be used in bone repair.
- ◆ This research team evaluated osteoblasts growth on EPCL scaffold using scanning electron microscopy

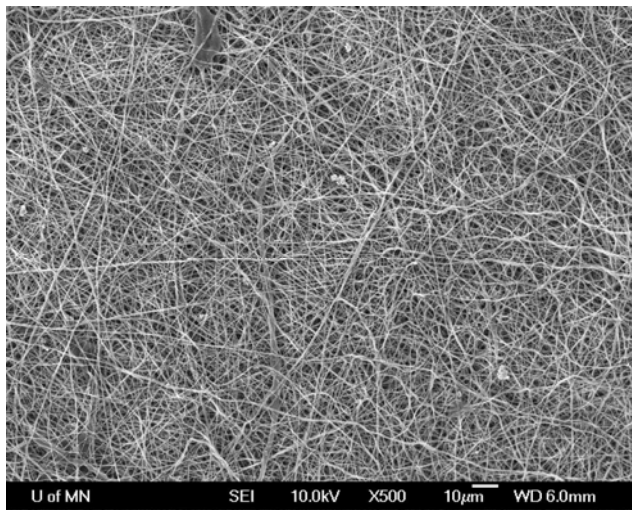


Figure 1

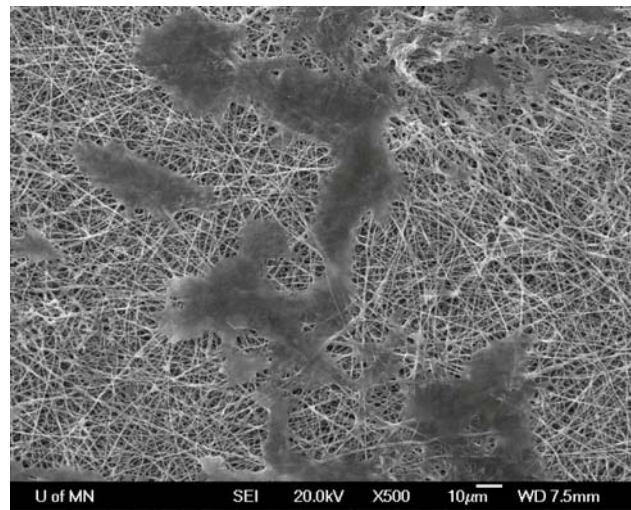


Figure 2

● MAJOR OBSERVATIONS

- ◆ Figure 1 shows the morphology of scaffold surface
- ◆ Figure 2 shows cell growth on scaffold surface after 24 hours