

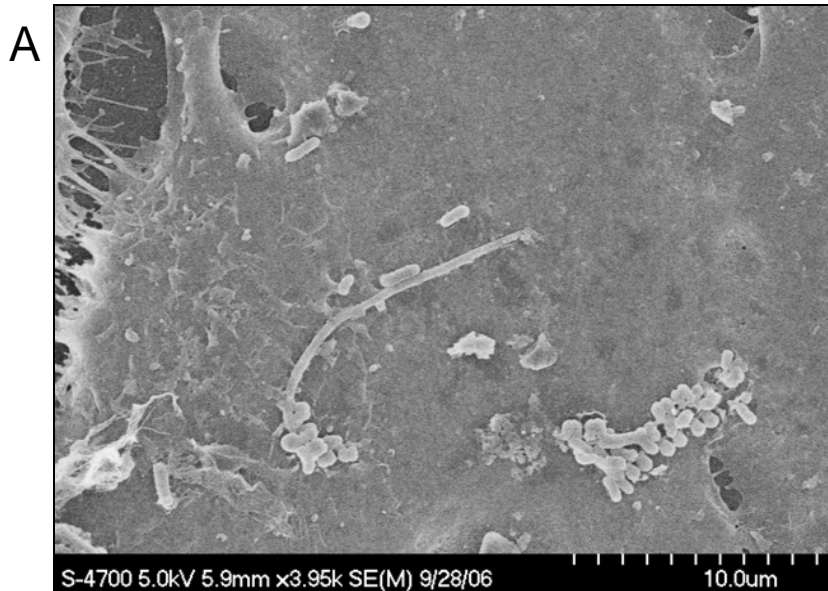
# Extracrevicular Invasion by Periodontal Pathogens (NIH grant DE 14214)

Joel Rudney (PI), Tracy Grossman

Diagnostic & Biological Sciences, Dentistry, University of Minnesota

## DESCRIPTION OF WORK

- ◆ Use FESEM to validate a model of bacterial invasion from biofilms placed in close proximity to oral epithelial cells.



## MAJOR OBSERVATIONS

- ◆ A. Invasion of an oral epithelial cells by a consortium of bacteria species originating from a mixed biofilm
- ◆ B. High magnification images of invasion

B



## Publications

- ◆ This work has not yet been published