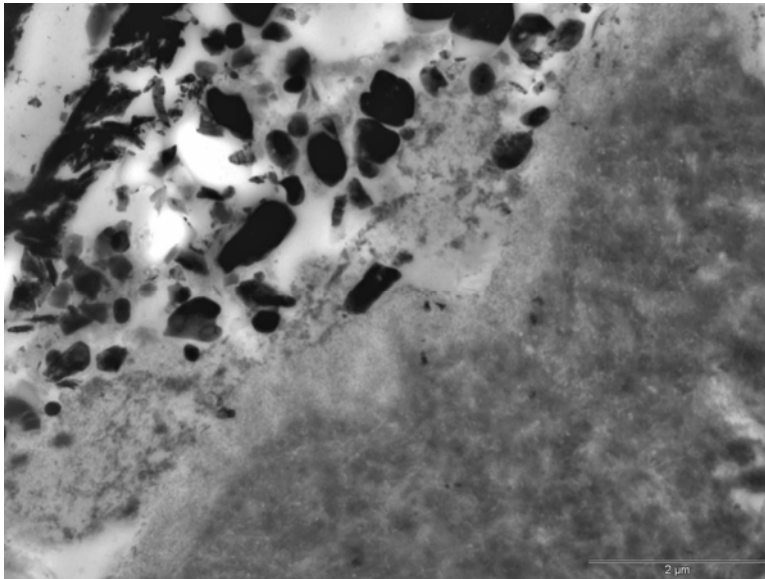


Interfacial Adaptation of Adhesive Materials to Root Canal Dentin

Jorge Perdigao, Department of Restorative Sciences

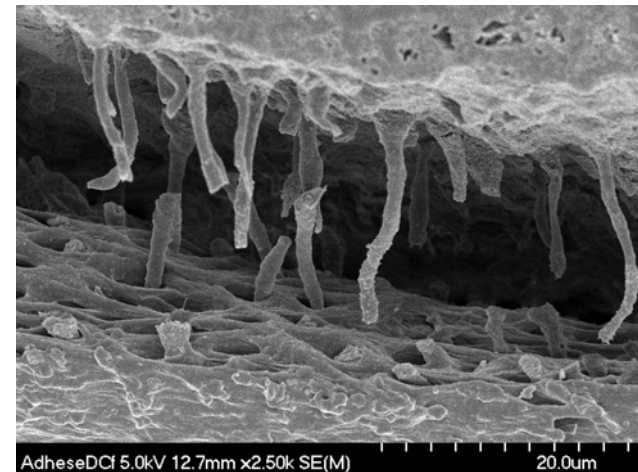
DESCRIPTION OF WORK

- ◆ Compare the sealing ability of root canal sealers using FESEM and TEM
- ◆ Test the null hypothesis that a new self-adhesive canal sealer does not prevent leakage.



MAJOR OBSERVATIONS

- ◆ In spite of the hybridization, a tight seal of the root canal is difficult to achieve because of the complexity and the mechanical challenge of the substrate
- ◆ The new self-adhesive sealer does not provide better seal than t conventional sealers.



Publications

- ◆ Perdigão J, Lopes M, Gomes G (2007). Interfacial adaptation of adhesive materials to root canal dentin. *Journal of Endodontics* 3:259-263.
- ◆ Perdigão J, Gomes G, et al. (2006). SEM/TEM interfacial morphology of adhesive materials to root canal dentin. *Journal of Dental Research* 85 (Spec Iss A): Abst #1350