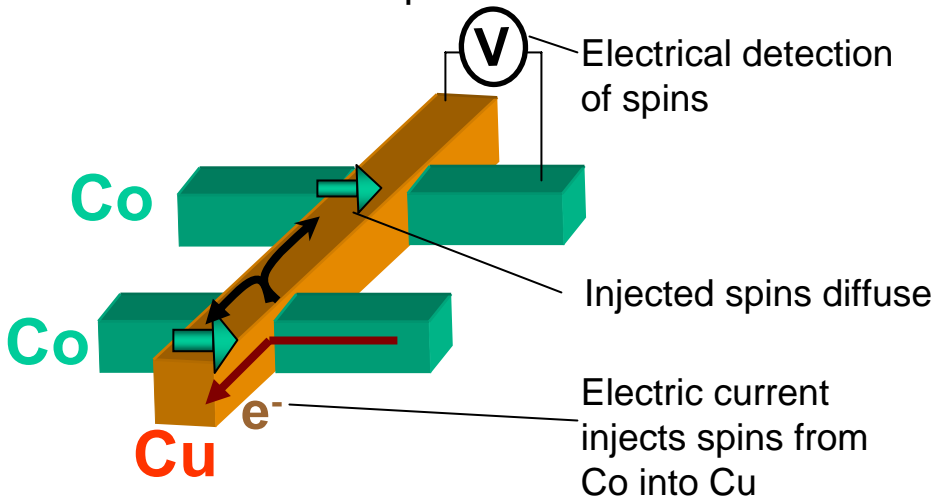


# Spin Transport in Normal Metals

M. Chan<sup>1</sup>, M. Erickson<sup>1</sup>, J.P. Parker<sup>1,2</sup>, C. Leighton(PI)<sup>2</sup>, P.A. Crowell(PI)<sup>1</sup>  
 Physics<sup>1</sup>, Chemical Engineering & Materials Science<sup>2</sup>, University of Minnesota

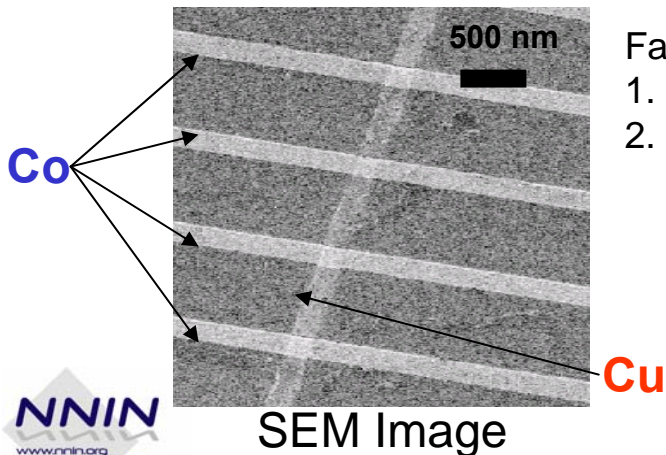
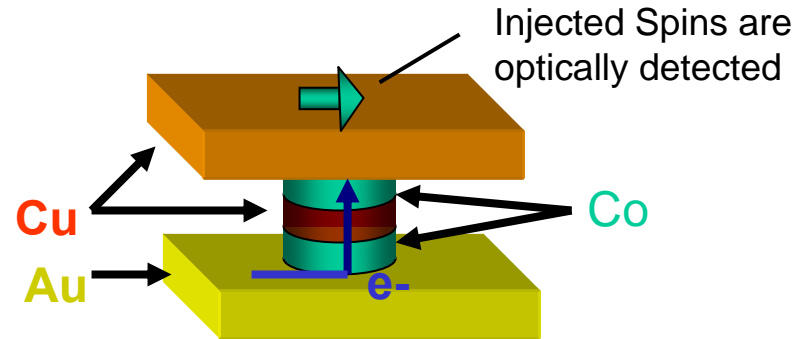
- Electrical spin detection

- ◆ Lateral spin valves



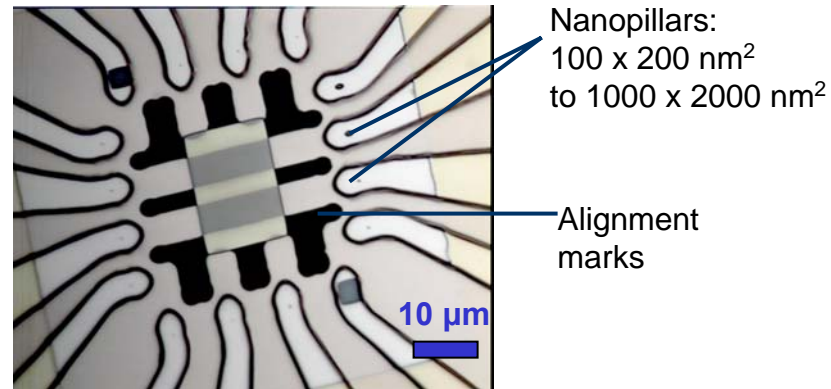
- Optical Spin Detection

- ◆ Nanopillars



Fabrication:

1. E- Beam Lithography
2. Angular MBE deposition



Optical micrograph