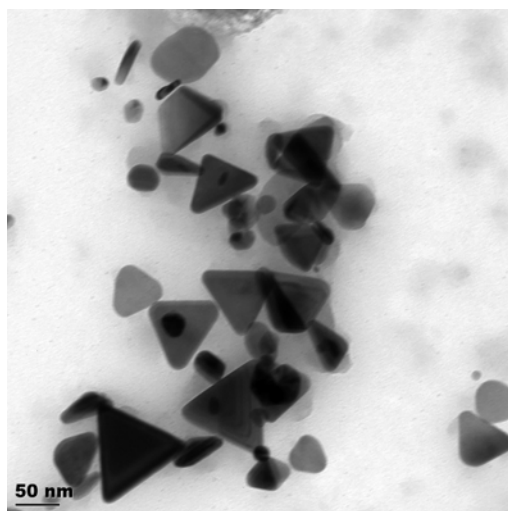


# Size and Shape Tunable Nanoparticle Fabrication

*Prof. Christy L. Haynes (PI), Lindsay Werkmeister  
Department of Chemistry, University of Minnesota*

λ Fabricate and characterize a library of nanoparticles for cytotoxicity studies

- ◆ Noble metal nanoparticles
- ◆ Polymer nanoparticles
- ◆ Core-Shell Nanoparticles



λ Nanoparticles are taken up by cells

- ◆ Nanoparticles are localized in vesicles
- ◆ Nanoparticles influence cell secretion

