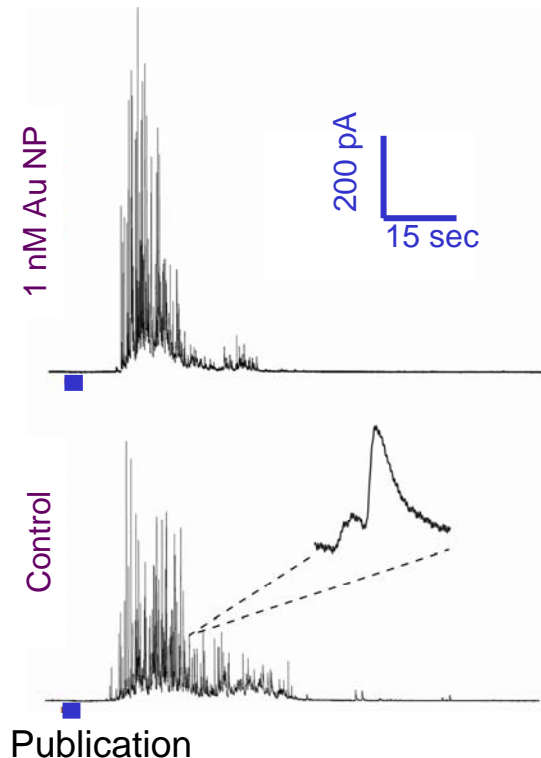
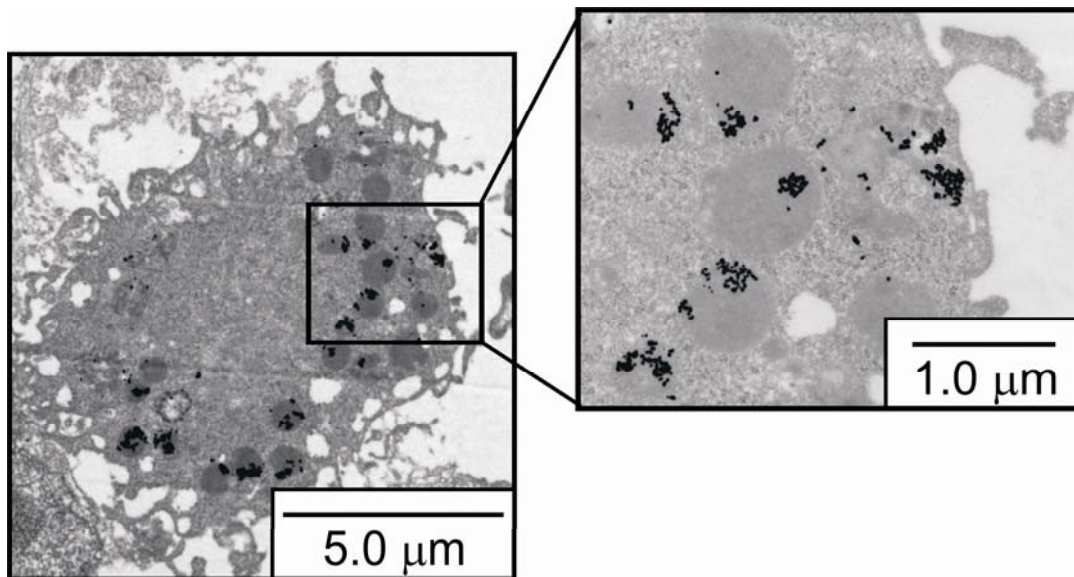


Assessing Nanoparticle Cytotoxicity

Christy L. Haynes (PI), Bryce J. Marquis, and Katherine L. Braun
Department of Chemistry, University of Minnesota
NNIN Facility utilized: Characterization Facility

- Nanoparticle incorporation into commercial and therapeutic products is increasing drastically.
 - ◆ Interactions between physiology and nanoparticles are unknown
 - ◆ New methods must be developed to assess changes in critical cell function
- Immune system cells take up Au nanoparticles
- Electrochemical assay shows change in exposed cell's ability to exocytose chemical messengers



Publication

- ◆ Bryce J. Marquis, Adam D. McFarland, Katherine L. Braun, and Christy L. Haynes, "Dynamic Measurement of Altered Chemical Messenger Secretion after Cellular Uptake of Nanoparticles using Carbon-Fiber Microelectrode Amperometry," *Analytical Chemistry*, accepted.