

Signatures from the Birth of the Universe

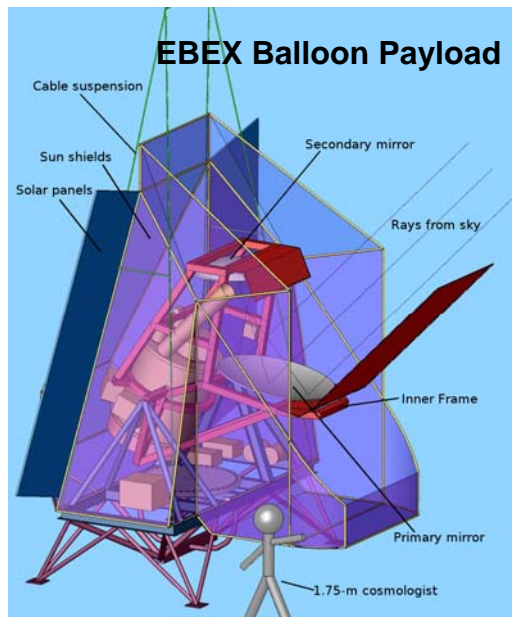
Shaul Hanany (PI), Hannes Hubmayr

Physics, University of Minnesota

NNIN Facility utilized: Nanofabrication Center

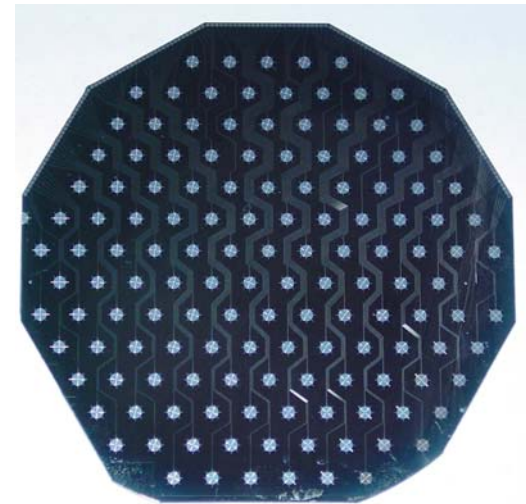
- Measurements of the Cosmic Microwave Background Radiation

- ◆ Probe the universe as close as 10^{-35} seconds after the big bang
- ◆ Balloon Borne Experiment
- ◆ Funded by NASA
- ◆ To be Flown in Antarctica



- Work at Nanofabrication Center

- ◆ Characterize and wire bond detector wafers
- ◆ Characterize anti-reflection coatings for lenses



Photograph of an EBEX detector wafer (courtesy of A. Lee, UC Berkeley)

- Publications

- ◆ Oxely et al. Proceedings of SPIE, Vol. 5543, Pg. 320