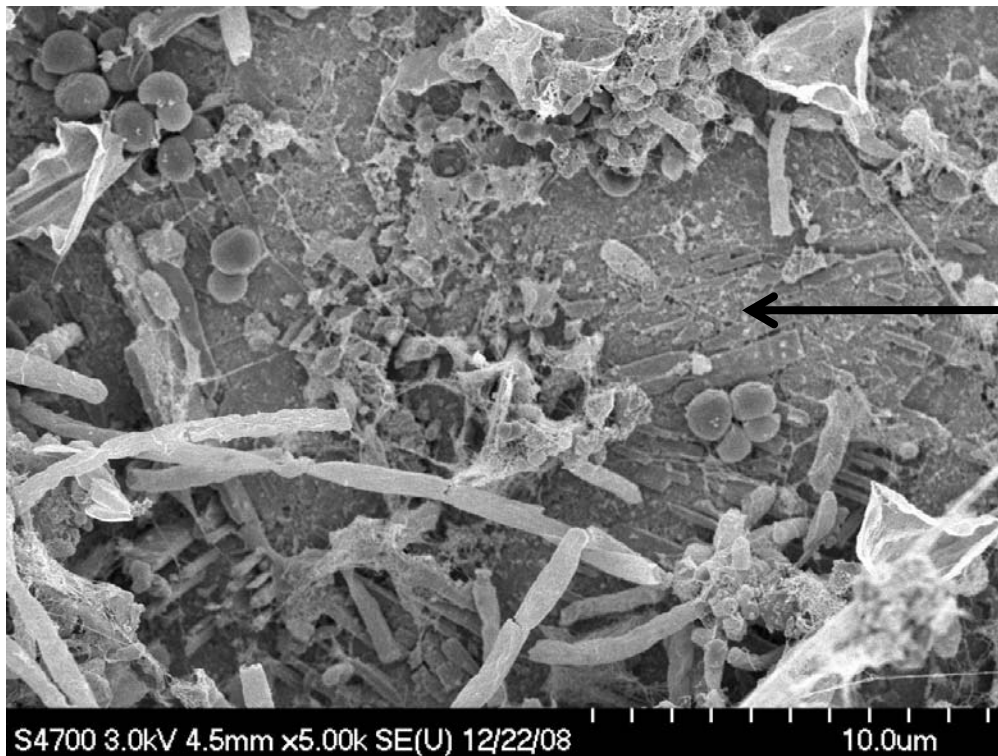


# Indirect Evidence of Microbially Influenced Corrosion (MIC) on Lead Surfaces

Raymond M. Hozalski (PI) and Ying Tan  
Civil Engineering, University of Minnesota  
NNIN Facility utilized: Characterization Facility



Scanning Electron Microscopy (Hitachi S 4700 SEM) provided an evidence of bacterial biofilm existence on Lead surfaces, indicating MIC.