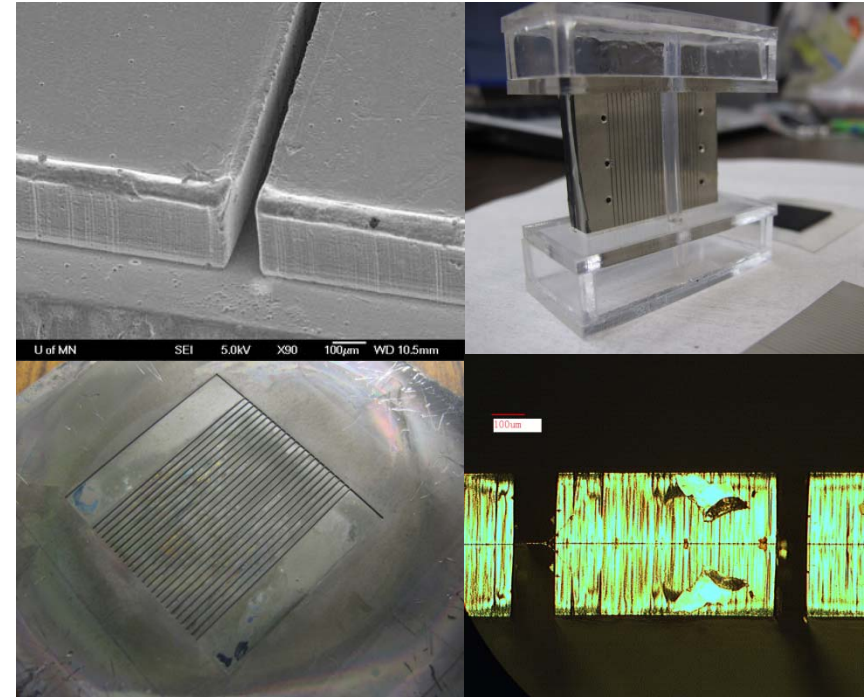
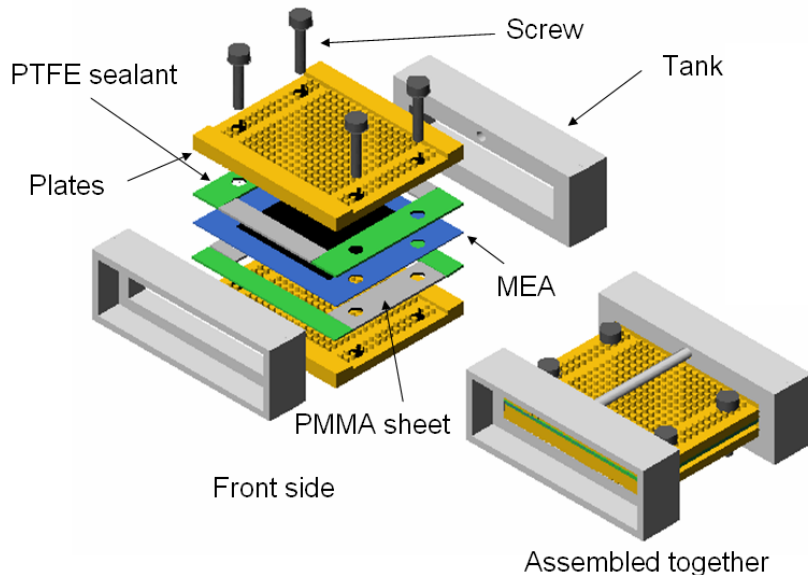


Self-Pumping and Self-Breathing Polymer Micro Methanol Fuel Cell (μ DMFC)

Tianhong Cui (PI) and Lingjun Sun
Mechanical Engineering, University of Minnesota

Fabrication of polymer polar plates for μ DMFC by hot embossing

- ◆ Reserved exposure of SU8
- ◆ Mold: Ni electroplating on glass
- ◆ Hot embossing ABS polar plates
- ◆ Ultra thick Ni layer deposit on ABS polar plates



Features: self-pumping and self-breathing

- ◆ Anode: capillary force and two phase flow to make the methanol solution convective
- ◆ Cathode: air is transferred through the hydrophilic porous carbon electrode